



GIT-WLAN02 Glove Integrity Tester



Zhejiang Tailin Bioengineering Co., Ltd
No.2930 Nanhuan Road, Binjiang, Hangzhou, Zhejiang, China.

TEL:0086-571-86589087 FAX:0086-571-86689998
E-MAIL: marketing@tailingood.com WEB: www.tailinscitech.com

 @Tailin  @Tailin_official  @TAILIN

The GIT-WLAN02 is used to leak test gloves installed on isolators or RABS. It performs the pressure decay test automatically and stores all data and results wirelessly on a PC with database support.

It meets the requirements of ISO 14644-7 Annex E.5. and EU GMP Annex 1.



“The pressure decay tests described are only a few of many tests that can be used for glove testing and are intended to illustrate glove leak test procedures.”

ISO14644-7 AnnexE.5

“For isolators, leak testing of the glove system should be performed using a methodology demonstrated to be suitable for the task and criticality”

“For RABs, Gloves should be visually examined with each use, and integrity testing should be performed at periodic intervals.

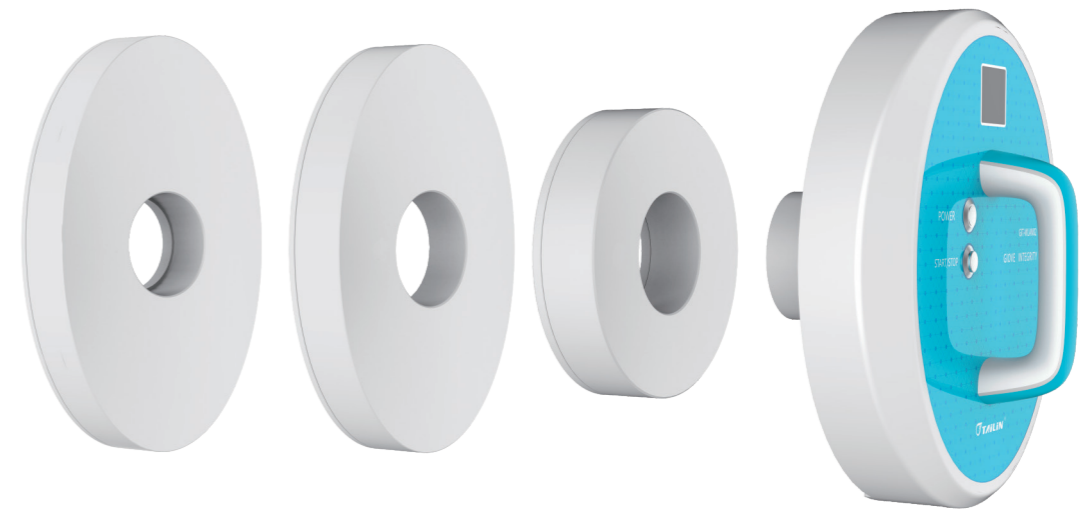
EU GMP Annex 1 22.8.2022 C(2022) 5938 final

Features

- In-situ testing, no glove removal
- Ergonomic and mobile design
- Removable test adapter to fit different glove ports
- Built-in pump, no external air source required
- Replaceable battery, no need to wait for a recharge
- Up to 8 hours of standby time
- Wireless connection to PC
- RFID technology for glove test tracing and analysis

Functions

- Unlimited number of glove tests at the same time
- Compatible with all glove types (CSM, EPDM, Nitrile etc.)
- Fully automatic monitoring of pressure changes in gloves and isolators
- Compliant with cGMP and ISO14644-7
- The software supports OPCUA and Modbus protocols for data communication with other systems such as SCADA and MES
- Optional tablet PC for clean room
- Multi-level authority user group
- Software compliant with 21CFR Part 11
- Powerful glove test management system



Technical Data

Max.Inflation Pressure: 2500Pa	Smallest Detectable Hole:100µm	Continuous Working Time:≥ 6 hours
Test Time:3min.-6min.	Net Weight:Approx.3Kgs	Batteries:12V Lithium-ion battery
Pressure Display Resolution:0.1Pa	Communication:WIFI	Power:≤20W
Main Frame Dimensions:Φ280mmx150mm		

For gloves in different areas, the GIT-WLAN02 can be wired over a network for group control. Glove test results from each area are transmitted over the wireless network for server-side file sharing.